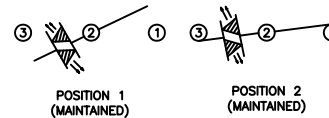


SCHEMATIC



SPECIFICATIONS

FUNCTION:
1P1T OFF-ON

RATINGS:
UL 1054
20A 125VAC [cURus]
16A 250VAC [cURus]
3/4HP 125/250VAC [cURus]

ENEC/VDE
16(4)A 250V~ 1E4 T85/55 [ENEC10, VDE]
10(2)A 250V~ 5E4 T85/55 [ENEC10, VDE]
20(8)A 250V~ 1E4 T125/55 [ENEC10, VDE]

ILLUMINATION VOLTAGE:
14V

CONTACT RESISTANCE:
Initial: 20mΩ Max.

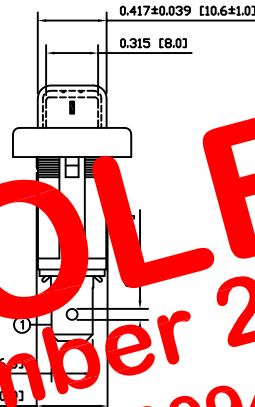
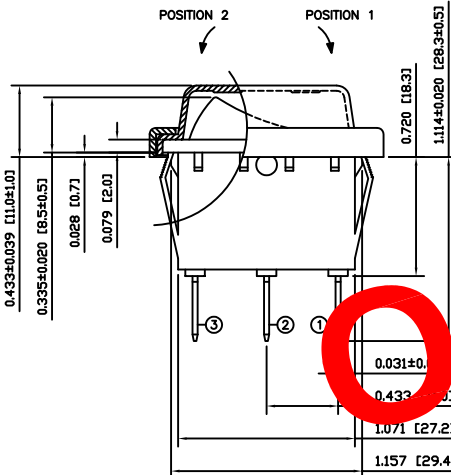
INSULATION RESISTANCE:
100MΩ Min. at 500VDC

DIELECTRIC STRENGTH:
1,000VAC for 1 Minute

ELECTRICAL LIFE:
6,000 Cycles [cURus]
10,000 Cycles [ENEC10, VDE: 16(4)A 250V~]
50,000 Cycles [ENEC10, VDE: 10(2)A 250V~]

TEMPERATURE:
Operating: -20°C to 65°C [cURus]
Operating: -20°C to 125°C [ENEC10, VDE]
Operating: -20°C to 85°C [ENEC10, VDE]

APPROVALS:



OBSOLETE
 November 2017
 PCR 23094

COLORS AND MARKINGS

BODY:
Black

ACTUATOR:
Transparent Red

MARKINGS:
I/O Vertical (1)

MARKING COLOR:
White

FRAME:
Black

MATERIALS

BODY:
Polyamide 6/6 (PA66), UL94 V-2

ACTUATOR:
Polycarbonate (PC), UL94 V-2

LAMP CARRIER:
Polyamide 6/6 (PA66), UL94 V-2

LAMP:
LED

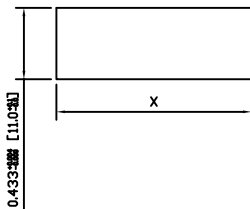
LAMP SPRING:
Steel

SPRING:
Steel

CONTACTS:
Silver Plated Copper

TERMINALS:
Silver Plated Copper
Silver Plated Brass

SUGGESTED PANEL CUTOUT



PANEL THICKNESS		X
0.030~0.049	[0.75~1.25]	1.189 [30.2]
0.049~0.079	[1.25~2.00]	1.201 [30.5]

ACTUATOR	A	09/07/08	CAB
BODY	A	09/07/08	CAB
COLORS	A	10/02/19	CAB

THE INFORMATION CONTAINED IN THIS DOCUMENT IS PROPRIETARY TO E-SWITCH AND IS NOT TO BE COPIED OR TRANSFERRED

B	LAMP FROM INCAND. BULB TO LED, UPDATE SCHEM. AND SPEC.	21826	6/15/2015	MW
A	INITIAL RELEASE	18992	10/02/22	CAB
REV.	DESCRIPTION	PCR	DATE	DRAWN BY

DIMENSIONS	
INCHES [MILLIMETERS]	
GENERAL TOLERANCES	
±0.008 [±0.2] / ±1'	
SCALE	PROJECTION
DRAWING NOT TO SCALE	1st Angle

RB141D1021-11A/ACC-F01-1

ITEM NUMBER	DATE	REVISION
14-RB1S00058	FEBRUARY 22, 2010	B